

# CREATING METALLICS ON YOUR POUCH

## SETUP GUIDE

INTRO

All our printing inks are transparent! So when printing on metallized film, we print white ink under the artwork—except for metallic artwork elements.

**For pouches with metallic artwork, you must choose metallized film for your material when placing your order.**

**These instructions are for use in Adobe Illustrator, to help you set up the white ink layer in your art file.**

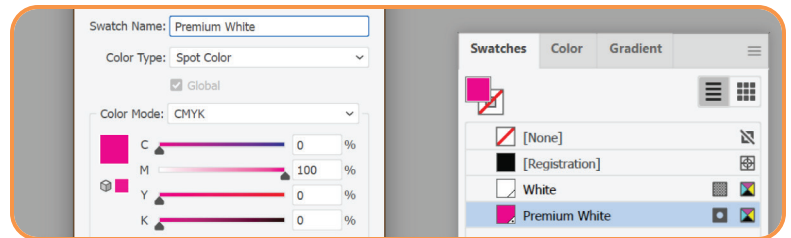
CREATE THE WHITE INK LAYER

### Create the **WHITE INK LAYER**:

1

In the **Swatches panel**, create a new swatch.

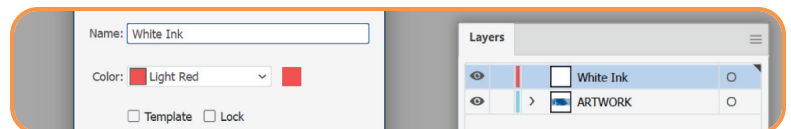
Make a spot color named “Premium White” that’s 100% magenta.



2

In the **Layers panel**, create a new layer.

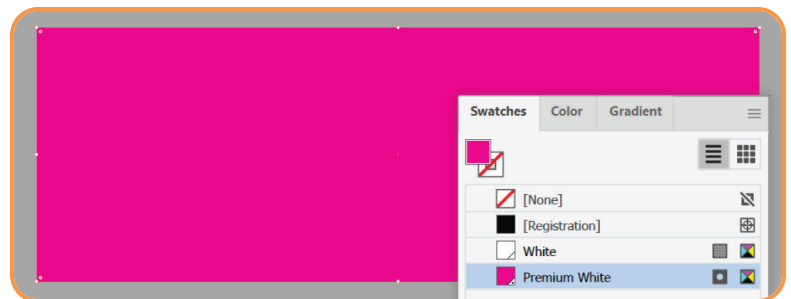
Name it “White Ink”, and put it at the top of the layer list.



3

In the **WHITE INK LAYER**, create a rectangle that’s the same size as the artboard (make sure it covers the entire artboard area).

Fill it with the “Premium White” swatch.



PICK METALLIC ELEMENTS

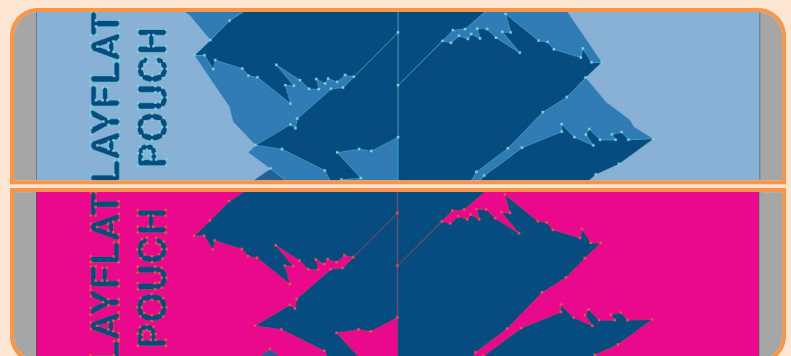
### Pick metallic elements from the **ARTWORK LAYER**:

1

In the **ARTWORK LAYER**, select ALL the art objects you’d like to be metallic, then copy them.

2

In the **WHITE INK LAYER**, paste the copied objects in place (Edit → Paste in Place).



## CREATING METALLICS (CONT.)

Create the final metallic shape in the **WHITE INK LAYER**:

1

With the pasted objects in the **WHITE INK LAYER** still selected, use the **Pathfinder panel's** Unite tool to merge any overlapping shapes.

2

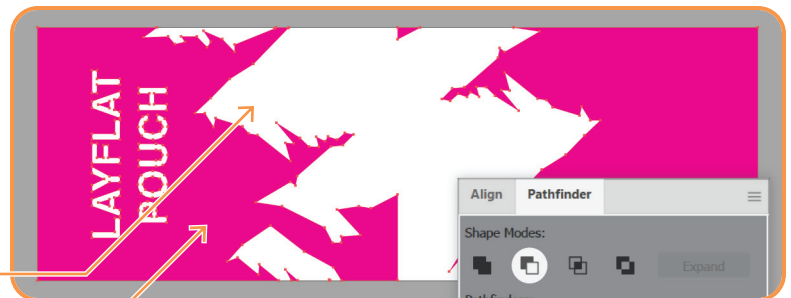
Combine all the metallic shapes into a single object by making a compound path (Object → Compound Path → Make).



3

Ensure the combined metallic object is in front of the Premium White rectangle (Object → Arrange → Bring to Front).

Select both the metallic object and the rectangle behind it, then use the **Pathfinder panel's** Minus Front tool.



White ink **WON'T** be printed in unfilled areas.  
THESE AREAS WILL APPEAR METALLIC.

White ink **WILL** be printed in spot-color-filled areas.  
THESE AREAS WILL APPEAR NON-METALLIC.

4

In the **Attributes panel**, with the resulting compound path selected, check the box for "Overprint Fill".



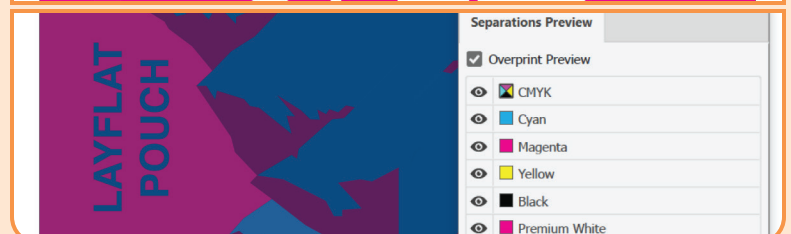
Viewing only the **ARTWORK LAYER**.



Viewing only the **WHITE INK LAYER**.



In the **Separations Preview panel**, you can toggle Overprint Preview to see both layers together and ensure your metallic elements are aligned between them.



For questions, contact [graphics@thepkglab.com](mailto:graphics@thepkglab.com).